

A PROJECT BY

SEEC Photography: Enar de Dios Rodríguez, Philipp Haslinger (TU Wien), Thomas Juffmann (Uni Wien) together with Victoria Helm (Uni Wien) and Dominik Hornof (TU Wien) and Jonathon Keats

Thanks to Christine Danninger, Ilse Schachinger, Christa Öhlinger-Brandner, Ersoy Yasar, Fritz Wolf, Martin Trautwein, Stefan Leitner and Christina Jaritsch

culture project of **salz kammer gut 2024** European Capital of Culture Bad Ischl Salzkammergut

THE TEMPORAL FOREST

by SEEC Photography and Jonathon Keats

Top Partner

Raiffeisen 

Destination Partner

salzkammergut

Official Partner

oberösterreichische
versicher.at



 **BAD ISCHLER**

Funding Bodies

 **Bundesministerium**
Kunst, Kultur,
öffentlicher Dienst und Sport

mit Unterstützung von **Kultur** 





Programme Partner

pro:Holz

Project Partner

 **universität wien**  **TU** TECHNISCHE UNIVERSITÄT WIEN

May 17 - October 27, 2024
Galerie Kunst & Kultur im BrauhoF
& 12er Kogel

Can our perspective of time change the way we behave towards our surroundings? What if we were to live hundreds of years like a tree? Or just one of the nanoseconds that are crucial for photosynthesis? What kinds of cameras could in fact represent such extreme scales of temporality?

The Temporal Forest is an art-science project that combines the fastest and the slowest photographic techniques to date in order to open up new perspectives on the environment and to think beyond the traditional human horizon of time.

The movement of light, which has a speed of 299 792 458 meters per second, is captured in a video installation located in Scharnstein. By using a pulsed laser and a gated camera with ultra-fast shutter times, this installation showcases how light moves across a series of trees characteristic from this region. Consequently, the videos literally show light (photo-) in the process of writing (-graphy) an image of Salzkammergut's forests.

SEEC PHOTOGRAPHY is a photographic science-art project that investigates how light moves across a subject. Founded in 2016, this project was presented internationally in a wide variety of institutions.

LOCATION

Galerie Kunst & Kultur im Brauhof
Brauhausstraße 2, 4644 Scharnstein
Saturday and Sunday, 10:00-15:00
and by appointment by calling
+43 664 5302320

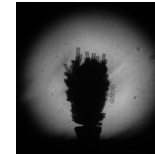
High in the Alps, a millennium camera photographically documents the next thousand years of environmental change in the region. This hand-built camera has a minuscule pinhole that focuses light onto colored pigment, very slowly imprinting a unique positive image. The resultant photograph will be a testament to the passage of time, captured through a thousand-year-long photographic exposure.

JONATHON KEATS is an American conceptual artist and experimental philosopher known for creating large-scale thought experiments. He has exhibited and lectured at dozens of institutions worldwide.

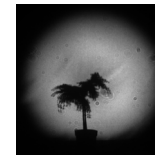
LOCATION

12er Kogel, Almsee

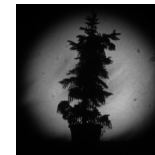
One of the most important aspects of a healthy and sustainable ecosystem is maintaining high species diversity within it. Illustrated in SEEC Photography's video installation are various trees, each possessing distinctive presence and narratives.



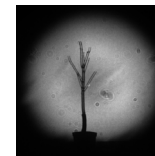
HICK'S YEW Popular evergreen hedge plant. The related native yew can live for thousands of years and thrives best in the shade of beech. It has very valuable wood with high elasticity.



BLUE DWARF HIMALAYAN CEDAR Originally from the Himalayas, it is now found in domestic gardens. Larger species, such as the Atlas cedar and the Lebanese cedar, are being experimentally reforested in Austria because they are robust, heat-resistant, and provide sought-after wood.



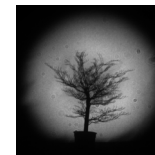
SPRUCE Spruce wood is a versatile material, making it one of Austria's economically most important trees. However, climatic changes and the spread of pests threaten it, making monocultures particularly vulnerable.



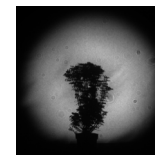
SWEET CHESTNUT loves mild climates, which is why it could continue to spread in Austria in the future. Its wood is similar to oak and very durable. It can also be used outdoors.



NORDMANN FIR This tree is often used as a Christmas tree. Originally from the Caucasus and northeastern Anatolia, it is resistant to drought. The silver fir woolly adelgid was also introduced with the Nordmann fir and affects native firs.



EUROPEAN BEECH Also called the mother of the forest by foresters. European beech and yew long formed the indigenous forest between the Bregenz and Vienna Woods. Today, climatic changes, such as drought and heat, are affecting them.



HOLLY Evergreen and shade-tolerant, Holly is currently spreading here. Harry Potter's wand and Goethe's walking stick are made of holly wood.